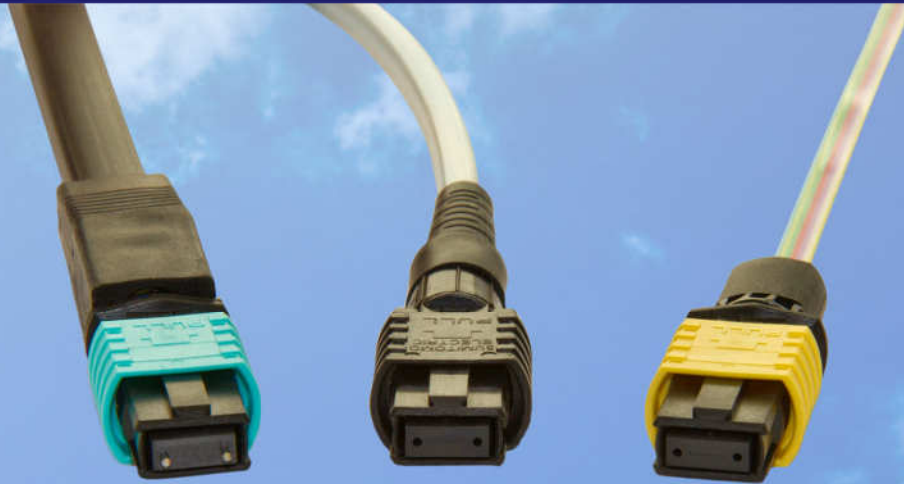




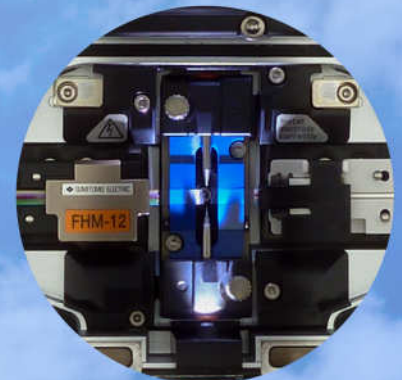
Lynx2

MPO Splice-On Connectors



Features

- For ribbon cord, ribbon fibre and ribbonised loose fibres
- Customisable polarity management in the field
- EIA/TIA-604-5 and IEC-61754-7 compliant
- Create custom length patch-cords in the field
- MPO terminations using standard T-71M12 fusion splicer



Specification

Connector Type	SMF low loss	SMF standard	MMF OM1 low loss	MMF OM2 low loss	MMF OM3 low loss
Polish	Angled	Angled	Flat	Flat	Flat
Housing colour	Yellow	Green	White	Black	Cyan
Insertion loss	≤0.4dB at 1310nm	≤0.75dB at 1310nm	≤0.4dB at 850nm	≤0.4dB at 850nm	≤0.4dB at 850nm
Yield in field assembly exceeds 90% as required by Telcordia GR-1081-CORE	≤0.4dB at 1550nm	≤0.75dB at 1550nm	≤0.4dB at 1300nm	≤0.4dB at 1300nm	≤0.4dB at 1300nm
Return Loss	≥55dB at 1310nm	≥55dB at 1310nm	N/A	N/A	N/A
Yield in field assembly exceeds 90% as required by Telcordia GR-1081-CORE	≥55dB at 1550nm	≥55dB at 1550nm	N/A	N/A	N/A

Lynx2 MPO configuration guide

Lynx2 MPO product names are written as Lynx2-12MPO(P1)-P2-P3 where 'P1', 'P2' and 'P3' define the connector gender, the fibre type and the fibre media type. Using the configuration guide below you can find all the valid product names for all Lynx2 MPOs.

Connector	P1 - Gender	P2 - Fibre type	P3 - Fibre media
Lynx2-12MPO	Male = M	SMF low loss = SMLL	Round cord = 3
	Female = F	SMF standard = SM	Fibre ribbon = RBN
		OM1 low loss = M6(OM1)LL	Ribbon cord = RBC
		OM2 low loss = M5(OM2)LL	
		OM3 low loss = M5(OM3)LL	

Examples

Lynx2-12MPO, Male, SMF standard, fibre ribbon: Lynx2-12MPO(M)-SM-RBN

Lynx2-12MPO, Female, OM1 low loss, ribbon cord: Lynx2-12MPO(F)-M6(OM1)LL-RBC

Lynx2-12MPO, Male, OM3 low loss, round cord: Lynx2-12MPO(M)-M5(OM3)LL-3

Lynx2 MPO essentials and accessories

Item	Part No	Item	Part No
T-71M12-KIT fusion splicer	TK041PD0001	FA-03 ribbonising tool	(5) TA026PD0009
Lynx cord tool 2mm/3mm ⁽¹⁾	TC007PD0024	FTA-2 consumables	(6) TA011PD0002
JR-6 heated ribbon stripper	TK012PD0004	Wipes, lint free	TA024PD0012
FC-6RM-C cleaving tool	TA013PD0048	Marker pen, black	(1) TC007PD0189
FHM-12 ribbon holders ⁽²⁾	TA022PD0074	Solvent dispenser	TA024PD0014
Lynx2-C(MT) ferrule holder ⁽³⁾	TA022PD0102	JIC-186 Kevlar® shears	(1) TA011PD0008
Lynx2-C(MT)_Metal holder ⁽⁴⁾	TA022PD0103	Steel rule, 15cm	(1) VP024IT0015

Notes

Note 1: needed for Round Cord or Ribbon Cord type Lynx2-MPO assembly but not for Fibre Ribbon type

Note 2: supplied as a pair, left and right holder. Left holder is used in Lynx2-MPO assembly

Note 3: plastic disposable ferrule holder. 1 supplied with every 100 Lynx2-MPO kits

Note 4: metal ferrule holder, alternative to using the Lynx2-C(MT) plastic ferrule holder

Note 5: needed only for assembly of Round Cord type Lynx2-MPO connectors. Requires FTA-2 consumables.

Note 6: consumables for use with the FA-03: adhesive and application sponges. Sufficient for assembling ~30 connectors